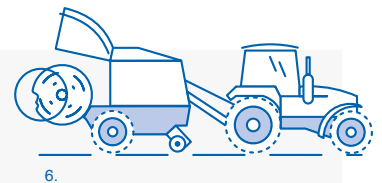
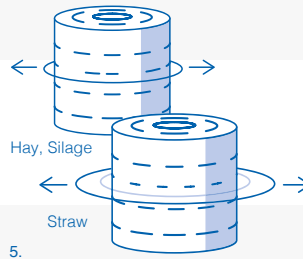
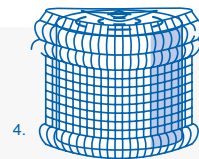
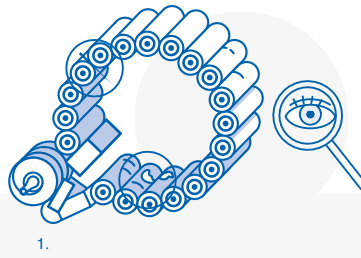
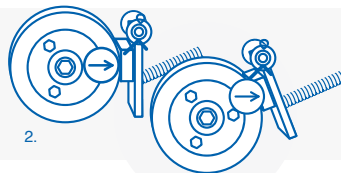


Damage to the bale

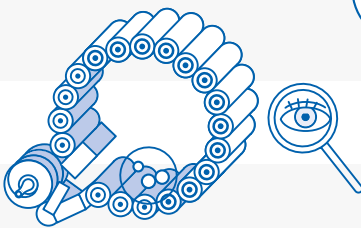
1. Damage in the baling chamber in the form of rust spots or sharp edges.
2. The bale is too big for the bale chamber and is stuck.
3. The round baler and the tractor are not level with each other.
4. The net is too wide, runs over the edges and the warp threads tear apart.
5. Insufficient net wrapping available. Number of straw: min. 4-5, hay/silage: min. 3-4
Depending on the crop, the number must be increased
6. Damage during ejection.



1.



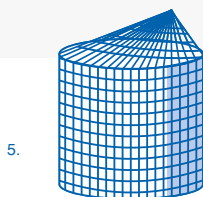
2.



3.



4.



5.

Net tie problems

1. The feed rollers run unevenly towards each other.
2. The net brake is not set optimally (see manual).
3. Foreign objects in the bale chamber.
4. The feed rollers are dirty or damaged.
5. The net from the last bale was not separated evenly.

Driving style when pressing

1. Unevenly compressed bales put more pressure on the net.

